

Sterile Collection Container



Ordered test(s):

<i>C. Difficil</i>	<i>Stool Culture</i>
<i>Chlam/GC DNA</i>	<i>Synovial Fluid</i>
<i>Fecal leukocytes</i>	<i>Trichomonas</i>
<i>Mycoplasma Genitalium</i>	<i>Urine culture</i>
<i>Sputum Culture</i>	

Stool Specimens



Ordered Test(s):
Ova and Parasites



Ordered Test(s):
Occult Blood

SPS Tube



Ordered Test(s):
Blood Culture

Clear Scotch Tape



Ordered Test(s):
Pinworm

Culture Swab



Ordered test(s):

GC Screen
 Gram Stain
 Rapid Strep A (2 swabs) -Throat
 Strep Group B Screen-Vag
 Throat, Vaginal, Ear, Eye,
 Nasal, Rectal, Wound, Mouth,
 Skin

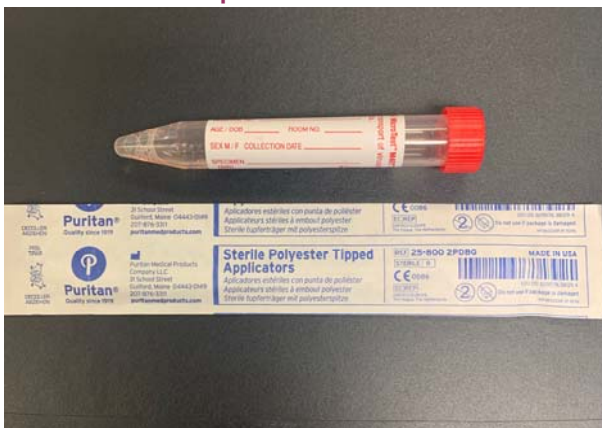
Anaerobic Culture Swab (with Gel)



Ordered test(s):

Anaerobic Culture

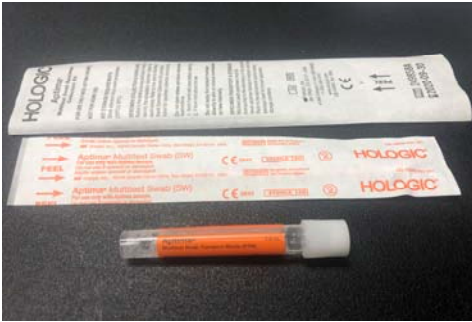
Viral Transport Media -M4/UTM/VCM



Ordered test(s):

Respiratory Profile, PCR

APTIMA Multitest Swab



Ordered test(s):

Vaginitis Panel, NAAT
(BV, Trich, Candida sp,
Candida glabrata)
Chlam/GC, Swab
Trichomonas
Mycoplasma Genitalium

Chlam / GC AND Trichomonas



APTIMA Unisex Genital Swab

OR



Unisex Urine Collection



ThinPrep

OR



APTIMA Multitest Swab-Orange

Liquid Based Pap Tests

Ordered Test(s):

Pap Smear

Urine Cytology

HPV

Trichomonas

Chlam/GC



ThinPrep



Brush



Broom



Paddle

Biopsy Specimens



10% Formalin

Ordered test(s):

Biopsy